



Yale SCHOOL OF NURSING
2017 SIMULATION EXPANSION & RENOVATION

BETTER
HEALTH FOR
ALL PEOPLE...



...by educating each generation of nurse leaders, scholars
and practitioners; transforming healthcare practice;
and advancing science.

– *The Mission of Yale School of Nursing*

“

Yale School of Nursing creates an unmatched educational experience, admitting – in the Yale tradition – students who will have an outsized impact on how the world engages in health. Our graduates reform health policy and manage health enterprises. They bring care to the most underserved. They generate science that changes population health and effective prevention and care delivery. YSN alumni are intellectual mavericks, and they challenge and change systems to create better health for all.”

Ann Kurth, Dean of Yale School of Nursing

Dear Friends,

For the second year in a row, the entering class for the Graduate Entry Prespecialty in Nursing (GEPN) program is larger than the class before it, even as YSN continues to be one of the most selective schools in the country. In March, US News and World Report released its rankings, and Yale School of Nursing (YSN) jumped 13 places to number 6 in the overall rankings, and number 8 in the DNP program. As YSN grows in size and prominence, there is an increased need to renovate and expand our current clinical simulation assets.

YSN's renovation and expansion of the Simulation Learning Center will roughly double the footprint of our current simulation learning center. As faculty members shift more of their teaching to rely on these excellent tools, the expansion is necessary to help maintain our status as one of the top graduate nursing programs in the world.



To keep pace with current national and global healthcare trends, greater numbers of advanced practice registered nurse leaders are required. The world needs more YSN nurses and midwives now more than ever. Your support is essential to ensuring YSN remains at the forefront of nursing science and research, as one of Yale's flagship professional schools.

Please join me in this important and exciting endeavor for Yale School of Nursing as we work to educate the next generation of nurse leaders, scholars, and practitioners.

Sincerely,

A handwritten signature in black ink, appearing to read 'Ann', written in a cursive style.

Ann Kurth, '90, PhD, CNM, RN, FAAN
Dean and Linda Koch Lorimer Professor of Nursing



Yale nurses and midwives do critical work in the healthcare system in roles that span clinical practice, research, policy, and education.

These Yale leaders are central to our healthcare system, advocating and delivering transformational care in clinics, homes, and acute care settings.

Yale School of Nursing's renovation and expansion of its Simulation Learning Center will undergird Yale's interprofessional educational initiatives (YSN students joined by Yale medical students and Physician Associates), promote opportunities for clinical research, and equip Yale faculty members and students with state-of-the-art instructional technology.

Nursing students entering the profession can find it daunting to transfer classroom learning into clinical practice which is why Yale School of Nursing includes clinical simulations as a part

of the curriculum teaching strategy. It provides students with interactive, practice-based instruction. YSN is currently home to a small but well-appointed simulation center that cannot, over the near term, meet the demand of the school's growing programs. The first-of-its-kind and lauded "Interprofessional Longitudinal Clinical Experience" groups nursing, medical, and physician associate students into simulation teams, placing further pressure on YSN's facilities. We now must include additional state-of-the-art clinical simulation space on the first floor of our building at Yale West (Yale's West Campus in Orange, CT). This presents a time-sensitive and lasting opportunity for partnership in this critical need for YSN, its students, and faculty.

New investments in the Simulation Center at YSN expand the capacity of the School to accept and enroll a larger master's student class and provide a high-quality education without a corresponding increase in clinical sites, a key constraint to growth. An expanded Simulation Center will

help students master clinical techniques in a controlled educational setting with close supervision by course faculty and simulation experts. Construction will begin on the expanded Simulation Center in 2017, approximately doubling YSN's current simulation laboratory space. The trends in U.S. healthcare suggest a shift to ambulatory settings, growing use of teleconsultations, etc. and so we will add not only an acute care skills lab area, but also community/home health care simulation space as well as primary care simulation rooms.

Simulation rooms are equipped with one-way mirrors and video recording gear, so faculty members can observe and provide supportive critique of a student's actions in a routine debriefing setting.

In a pediatric acute simulation setting, students can learn to safely start an IV on a hi-fidelity premature infant mannequin and, in a home health simulation setting, students may practice patient interactions beyond diagnosis and treatment, including prevention, therapeutic, and rehabilitation care.

Students are introduced to the best practices in patient safety and quality of care, and learn to think critically, solve problems, and provide care in a safe, nonthreatening environment where mistakes can be made with no risk to living patients. Students begin the simulation experience in their first semesters and continue to actively participate in simulation throughout their nursing education. Standardized patients, patient simulator mannequins, and other high-fidelity simulation approaches offer interactively challenging experiences that support future health care professionals in developing and practicing team and decision-making skills.

In the Task Trainer room and Assessment Lab, area-specific models are used to teach psychomotor and assessment skills. Students practice a variety of tasks, including starting IVs and practicing wound

care. The Task Training room has technology and space to allow students to learn about and observe vital procedures before entering clinical practice.

As students progress, learning becomes more complex, with the incorporation of psychosocial, communication and critical thinking skills. Various levels of mannequins and simulators add realism and complexity to learning experiences. For example, the ability to program heart and lung sounds in the "patients" enables students to listen and monitor appropriate anatomical locations or the ability to perform CPR in an emergency room setting.

Scenarios are carefully researched and prepared by the teaching faculty member, and then enacted using high and lo-fidelity mannequins, and specialized equipment, under the coordination of a simulation expert who is also an experienced clinician. Students master clinical techniques and skills under the supervision of faculty members. As students advance in their course of study and into their specialty, they encounter complex and challenging scenarios or complex diagnoses with simulated chronically ill patients, such as the urgent decision-making required in an at-risk maternal birthing delivery, the skills to engage with patients and their families in a home-care environment, and more.

Simulation projects continue to grow more challenging and include special moments like in early 2017, when YSN simulation leaders created a mock natural disaster and students were brought in to triage, deal with missing and damaged equipment, and navigate a complicated, urgent scene to provide care for the simulated wounded and their families.

NURSING SIMULATION TERMS

High-Fidelity Mannequin: a human-shaped mannequin with many sensors and computer-controlled mechanisms that simulate breathing, heart sounds, and palpable pulses. These costly mannequins allow students to take EKG readings, measure blood pressure, administer IV medications, and more. Some versions allow different procedures or scenarios, like YSN’s maternity simulator, which gives birth.

Scenarios: an interaction between a team of students designed to mimic a reality-based environment where students would encounter a complex patient with a history and particular, unique conditions. Scenarios vary but could include interactions in a hospital, clinical, or home-based setting. Scenarios are designed and overseen by faculty experts who use modern educational models and the latest

clinical evidence to equip Yale School of Nursing students for whatever they will encounter in the real world.

Standardized Patient: a person who has been specially trained by a faculty expert to be an actor in a scenario, respond to simulated conditions in a certain way, and obtain treatment or diagnosis in the simulation environment. Despite the range of equipment and computerized models, human models are still used for a variety of primary care and home-based simulation scenarios.

Task Trainers: a model of a particular body part or specialized equipment that allows the nurse practitioner or nurse midwife student to develop confidence and skill executing a particular task like intubating a patient, starting an IV, or suturing a wound.





“

By providing students with exposure to a variety of clinical situations through clinical practicum experiences and patient simulations, they can be better equipped to provide safe, effective care and work as contributing members of the health care team.

Durham, C. & Alden, K. (2008, April). Enhancing patient safety in nursing education through patient simulation. In Patient Safety and Quality: An Evidence-Based Handbook for Nurses (Chapter 51).

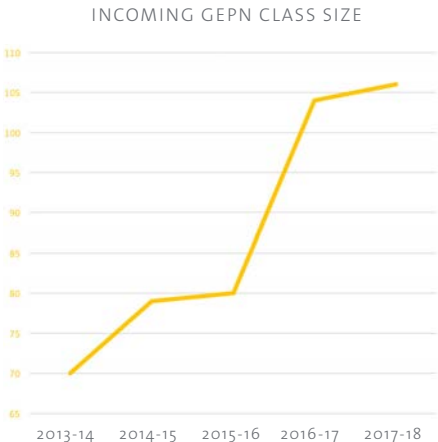
A healthcare system in crisis: Yale's response to the nursing shortage

To meet increasing health needs nationally and internationally, greater numbers of advanced practice registered nurse leaders are required out in the world. YSN stands ready to deliver. Larger numbers of students bring internal benefits, too, enriching the talents and viewpoints within each class. This has been borne out by the exceptionally stimulating range of intellectual and life experiences represented by YSN's current students – our largest group ever.

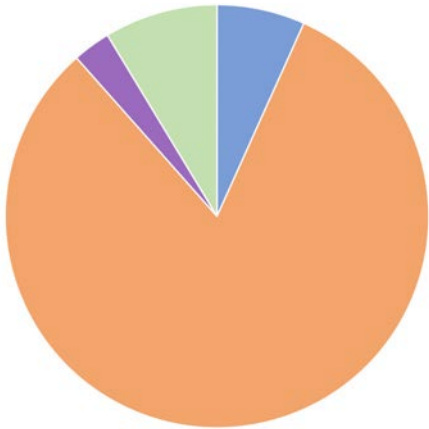
While our existing spaces are modern and well appointed, we are past our maximum capacity and these spaces are utilized daily and well into the evening hours. As faculty members shift more of their teaching to rely on these excellent tools, utilization increases and it is clear that roughly doubling the size of our current simulation learning center is necessary to help maintain our status as one of the top graduate nursing programs in the world.

Health care providers, researchers, and educators must reflect the populations they serve. A larger and more diverse student body is required to meet the complex health care challenges ahead.

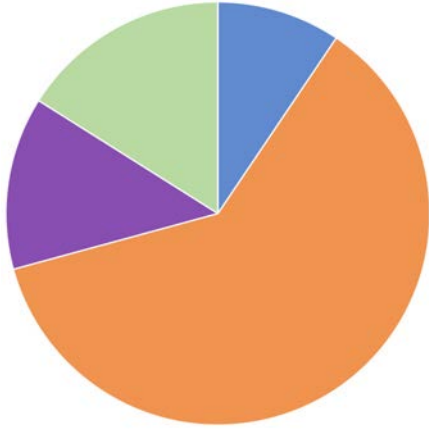
In the March 2017 *U.S. News and World Report* rankings, YSN jumped 13 places to number 6 in the overall rankings, and number 8 in the DNP program, remarkable because YSN has only graduated two cohorts in the DNP program.



YSN ENTERING CLASS 2016



YSN ENTERING CLASS 2017



- Hispanic or Latino (of any race)
- White alone (not Hispanic or Latino)
- Black or African American
- Asian

80,000

qualified applicants are turned away every year from nursing schools nationally due to insufficient faculty, classroom space, and clinical sites

(AACN's report on Enrollment & Graduate Programs)

90%

of all health care services are provided around the globe by nurses and midwives

(Partners in Health infographic on global nursing impact)

ILCE OVERARCHING GOALS

By working together in interprofessional teams in a clinical setting students will:

Begin to build a working knowledge of the patient-care experience and multi-disciplinary clinical environment.

Adapt history taking and physical examination skills to meet the needs of the patients in assigned clinical setting(s).



ILCE

interprofessional longitudinal clinical experience

A SIMULATION CURRICULUM BUILT ON COLLABORATION BETWEEN YALE SCHOOL OF MEDICINE, YALE SCHOOL OF NURSING, AND THE PHYSICIAN ASSOCIATE PROGRAM

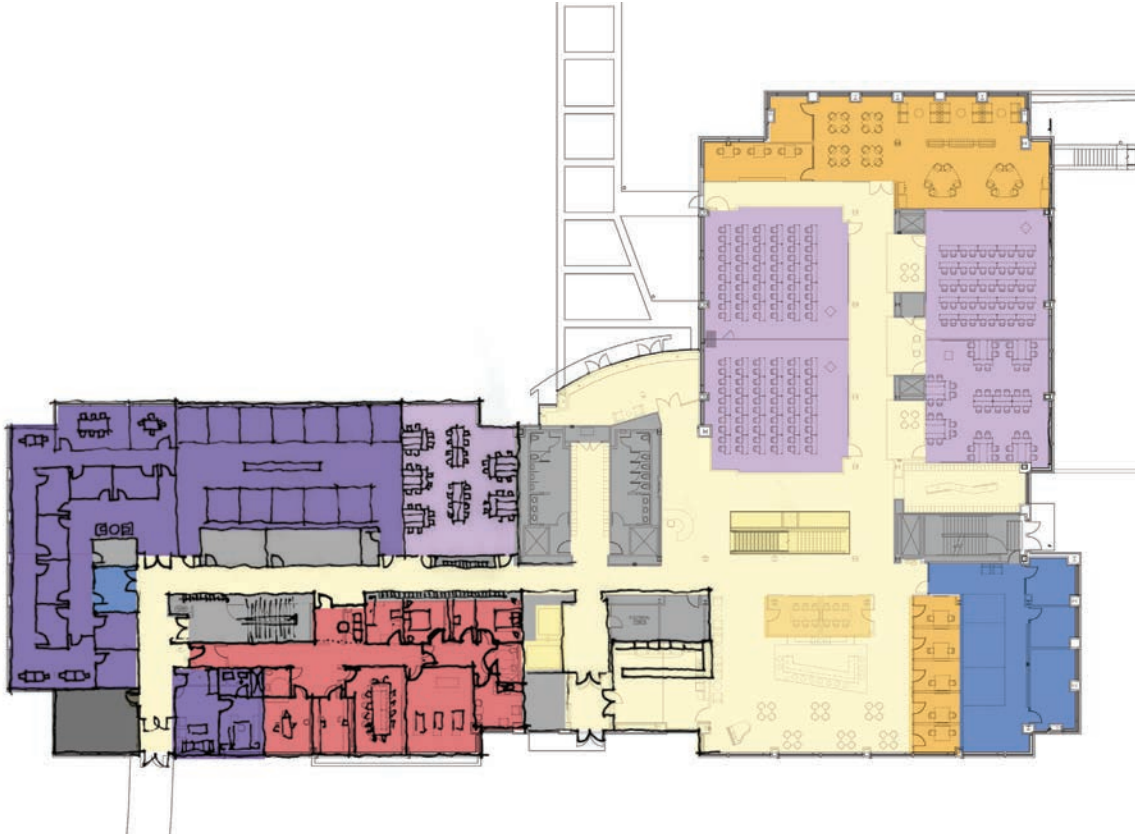
The Interprofessional Longitudinal Clinical Experience (ILCE) is designed to prepare first-year health professional students to function effectively in the clinical environment using simulation instruction. The structure and content of the curriculum is based on the needs of our current healthcare and academic environment. Yale School of Nursing (YSN), in conjunction with the Yale School of Medicine (YSM) and the Physician Associate (PA) program faculty guide groups of students in planned interprofessional clinical experiences in a consistent clinical setting. YSN

will lead the collaborative effort through this innovative model of simulation education based at YSN's West Campus location. Experiences are designed to help students begin to build a working knowledge of the clinical environment, health care organizations, and to learn to work effectively as part of the interprofessional healthcare team. Experiences will also include planned group meetings designed to teach patient and family centered interviewing, physical examination skills, clinical reasoning, teamwork, and factors that affect health and the health care delivery system.

Naming Opportunities

The following pages outline the naming opportunities made available by this expansion, as well as a number of existing premium spaces available at Yale School of Nursing. Directly situated on the busiest corridor in the northeast United States, Yale School of Nursing is the flagship academic school on Yale's West Campus.

Gifts may be recognized with dedicated named spaces within Yale School of Nursing, including the naming of the building itself. Named rooms are commemorated with a plaque and will carry that name in daily usage at Yale University. Gifts may be made in honor or memory.



New Naming Opportunities

In an effort to make the expansion of the simulation labs as successful as possible, Yale School of Nursing engaged in a community-led architectural study. The planning team solicited and considered broad input and identified needs from a wide variety of stakeholders. The team used this as an opportunity to meet with faculty, staff, and students to solicit feedback on the current state of the building and look for ways to make improvements in conjunction with the more pressing needs of increased simulation lab and classroom space. We look forward to sharing more architectural renderings with you when they are available later this fall.

John Moore Honors Family through Nursing Gift

When deciding where to direct their most recent \$1 million gift, John '89 and Christine Moore chose Yale School of Nursing and the Jackson Institute for Global Affairs, two programs they care deeply about. "Christine and I are thrilled to be able to support two deserving areas on campus," said John Moore. "Recognizing our parents in the process makes the gifts that much more meaningful to our family."

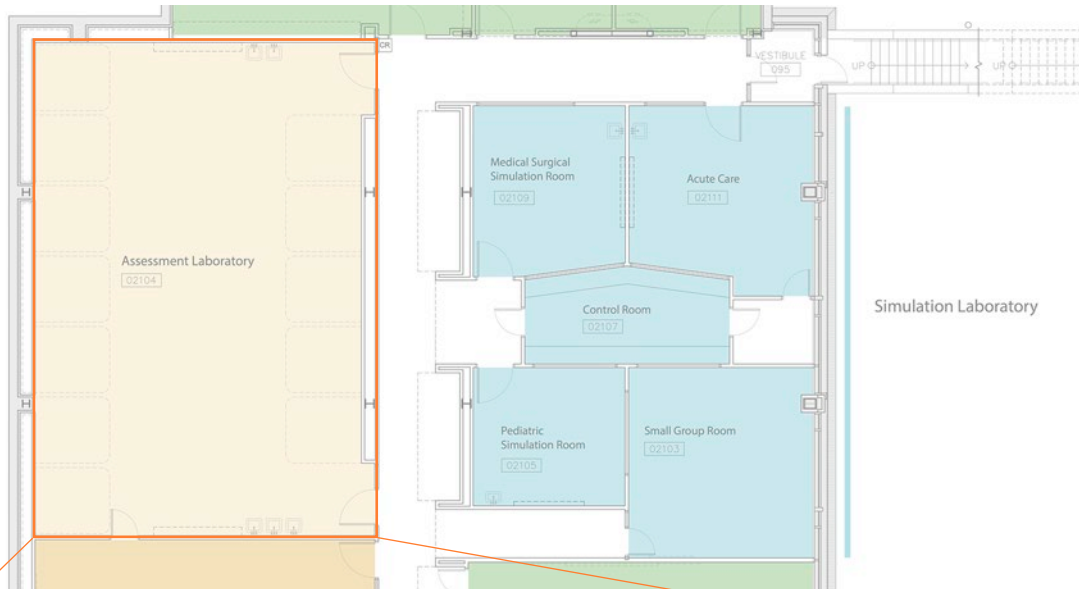
The Moores directed half of their contribution to help Yale School of Nursing renovate a wing of its West Campus home to secure new teaching space. In recognition of their gift, an existing classroom has been named the Linda Catherine Moore Classroom in honor of John's mother, who is a retired nurse. The 120-person classroom, the largest in the building, is used for large lectures, special guest speakers, and regular classes.

The school's construction project, slated to begin this fall, will reconfigure spaces on two floors to serve as an extended learning laboratory, with state-of-the-art equipment simulating clinical, home-based, tele-health, and acute care settings. "As we expand our student body, the addition of the simulation, assessment, and teaching spaces has been one of our top priorities," said Ann Kurth '90 MSN, dean of Yale School of Nursing. "The Moores' extraordinary gift will help us to realize this goal. By 2018, the school's current simulation laboratory space will be nearly doubled, allowing us to educate more Yale nurses and midwives, who will address the nation's and world's urgent and complex healthcare challenges."

Already the school has increased the size of its incoming class by 25 percent, while retaining its position as the most selective nursing school in the U.S. By 2018, Dean Kurth expects that the master's cohort will reach over 300 students, with a total population exceeding 400 across the master's and doctoral programs. "It is essential that our infrastructure and pedagogical support grow in parallel," she said. "We're so pleased at this meaningful investment and honored to celebrate this exceptional family."

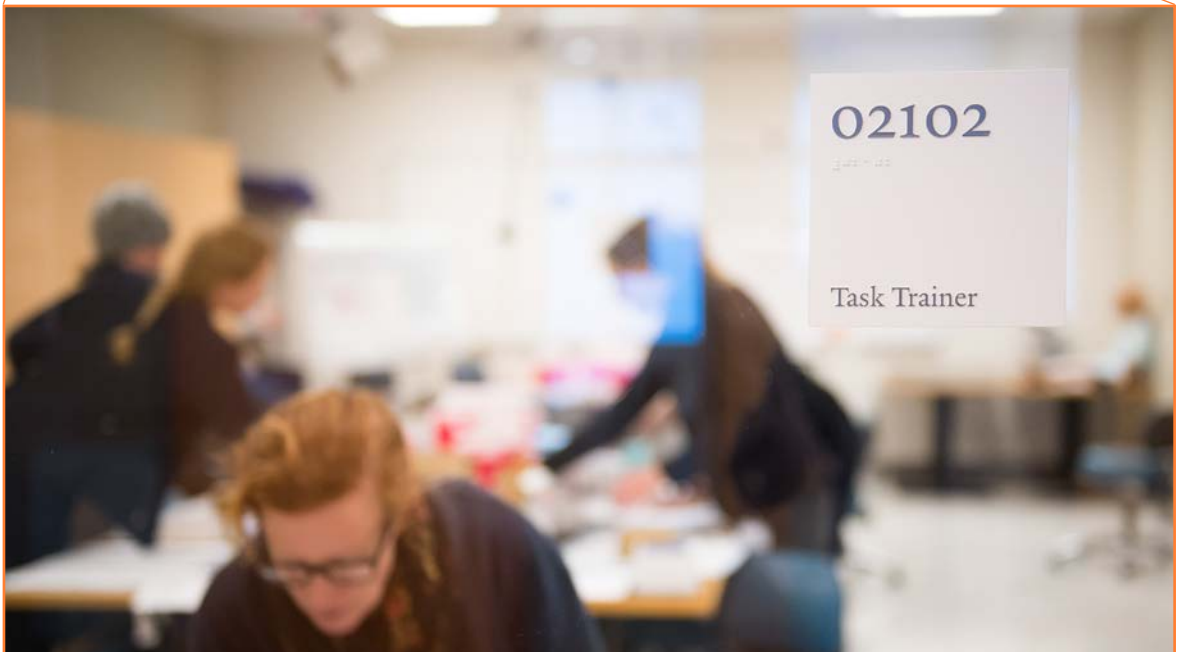
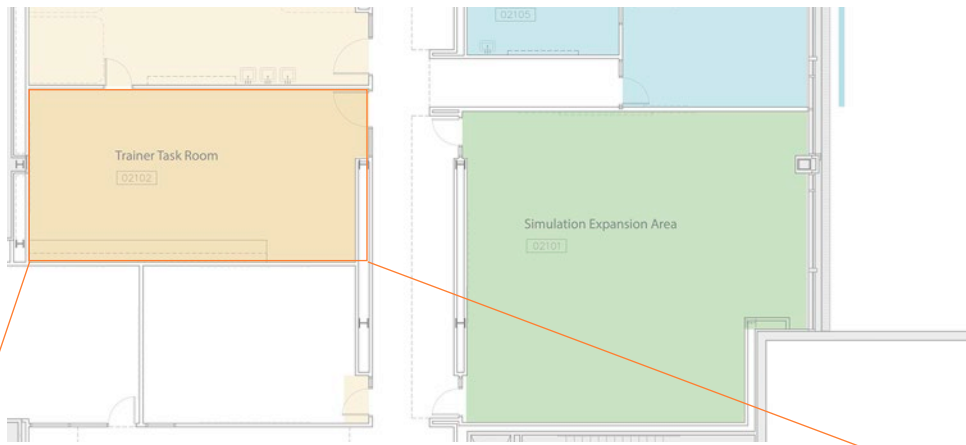


John Moore and his mother, Linda Catherine Moore



Assessment Lab

Located on the garden level of the Yale School of Nursing campus, the assessment laboratory is a large central teaching space surrounded by a dozen curtained examination areas. In these semi-private spaces, students working under close faculty supervision can experience a realistic clinical setting that includes an examination table and key clinical instruments. \$1,000,000, 1 opportunity



Task Trainer

Located on the garden level of the Yale School of Nursing campus, the task trainer room features a large central teaching space surrounded by learning stations where students can practice and review technical skills related to physical examinations and procedures. Spacious storage in the room contains a range of low-fidelity anatomical models for training—for example, model arms that students use to practice blood draws. [\\$250,000, 1 opportunity](#)



Acute-Care Simulation Laboratory

Located on the garden level of the Yale School of Nursing campus, the acute-care simulation laboratory is a high-technology teaching resource that allows students to safely practice their diagnostic and therapeutic techniques before moving on to a clinical setting. At the heart of the simulation laboratory is a centralized control room outfitted with computerized control units and video monitors. The control room's one-way mirrors overlook three hospital-style rooms, replicating acute care, surgery, and pediatric settings. Standing in for patients are high-fidelity mannequins that can realistically simulate a variety of health and medical conditions. Built-in sensors and video recording capability allow for students, peers, and faculty members to review each simulated clinical experience. **\$2,000,000, 1 opportunity, encompasses 5 rooms**

Additional naming opportunities

School of Nursing Building: \$25 million

Prominently positioned as the “front door” of Yale West Campus, the new School of Nursing campus supports a community of faculty and students engaged in research and learning. Modern and airy, the building houses state-of-the-art classrooms, faculty offices, academic centers, research laboratories, and community spaces. Custom-designed to serve the school’s forward-looking curriculum, the four-story building is an ideal location to prepare the next generation of healthcare leaders.

Classroom: \$250,000, 2 opportunities

Located on the garden level and first floor, classrooms provide a comfortable learning environment with natural lighting and outdoor views. With seating for fifty people, each classroom integrates state-of-the-art distance-learning technology.

Large Classroom: \$500,000, 1 opportunity

Located on the garden level and first floor, the large classroom provides a comfortable learning environment with natural lighting and outdoor views. Because of its size and flexible configurations, it can also serve as gathering spaces for school-wide lectures and special events. The large classroom has seating for one hundred people, integrates state-of-the-art distance-learning technology, and can be subdivided with moveable walls.

"The Hub:" \$1,000,000, 1 opportunity

This first-floor entry area functions as a center of activity and a gathering space for the School of Nursing, promoting collegial exchanges among all constituents of the school. The space features ample seating areas, kitchen facilities for student use and special events, and a number of individual study rooms. This space is highly visible within the school: it serves as an arrival point for visitors, and it is the location of choice for key social and community events.

Lobby: \$500,000, 1 opportunity

Part of the first-floor hub, the lobby is the main entryway to the School of Nursing. It is a highly visible and trafficked area during all hours of the day. Well-lit and welcoming, the space incorporates the receptionist area, the staircase to the garden level, views into key teaching spaces, and access to the school’s primary gathering and meeting spaces.

Lounge: \$500,000, 1 opportunity

Part of the first-floor hub, the lounge serves as an informal gathering space for students and faculty as well as a venue for formal events. Students make heavy use of the lounge for study and social purposes and may be found there at all hours of the day. In addition, the school typically schedules several events in the lounge each week, including scholarly meetings of faculty members and student organizations.

Study Room: \$150,000, 1 opportunity

Part of the first-floor hub, the study rooms are a suite of private, comfortable rooms branching off of the main lounge and lobby areas. Each of the seven rooms features sitting and meeting areas, and each is equipped with internet, white board, and electronic screens for small-group work and presentations.

Student Services Suite: \$1,000,000, 1 opportunity

The student services suite is a highly trafficked collection of offices located on the first floor of the building. It accommodates the functions of admissions, financial aid, the registrar, and student affairs.

TEAL Classroom: \$400,000, 1 opportunity

Located on the first floor, the technology enabled active learning (TEAL) classroom enables faculty to incorporate new media and distance learning into their teaching. Accommodating up to 50 students,

this classroom features easily configurable seating and tabletops, many flatscreen displays, larger projection screens, microphones, and cameras. The technology in this room plays an important role not only in the innovative curriculum offered to nursing students, but also in the dissemination of cutting-edge scholarship to audiences abroad.

Learning Commons: \$2,000,000, 1 opportunity

On the first floor of the School of Nursing campus, the learning commons functions as a technology-enhanced library for nursing students. This learning space offers private study areas, research media available for review and checkout, and shared resources for students that include copiers, scanners, and large-format printers. The office for the school's professional research librarian is also located here.

Biobehavioral Lab: \$1,000,000, 1 opportunity

Located on the first floor, the biobehavioral laboratory is the School of Nursing's primary physical research space. It is shared by multiple research programs at the school and is also used by other health-related researchers at Yale University. This multi-room complex includes a reception area, examination rooms, observation rooms with high quality video recording and one-way mirrors, basic diagnostic equipment, and a full sleep-study laboratory.

Child Study Laboratory: \$100,000, 1 opportunity

Located within the biobehavioral laboratory on the first floor of the School of Nursing campus, the child study laboratory spans several rooms. Researchers make use of a control/observation room where children and mother-child interactions may be recorded, as well as examination rooms and conference spaces.

Sleep Study Laboratory: \$150,000, 1 opportunity

Located within the biobehavioral laboratory on the first floor of the School of Nursing campus, the sleep study laboratory spans several rooms,

including a control/observation room, two bedrooms with observational and monitoring equipment, and living spaces to simulate home pre-sleep routines or accommodate lengthier studies.

Conference Room: \$100,000, 5 opportunities

Located adjacent to faculty offices on the upper floors of the School of Nursing campus, the conference room is a professionally appointed meeting space with seating for eight people. Available to faculty, students, staff, and visitors, each room is equipped with conference tables, ample seating, and audio-visual technologies, providing an effective environment for group meetings, collaborative projects, and study.

Large Conference Room: \$150,000, 1 opportunity

Located adjacent to faculty offices on the upper floors of the School of Nursing campus, the large conference room is a professionally appointed meeting space with seating for up to twelve people. Available to faculty, students, staff, and visitors, the room is equipped with a conference table, ample seating, and audio-visual technologies, providing an effective environment for group meetings, collaborative projects, and study.

Mother's Room: \$100,000, 1 opportunity

This second-floor room offers a private space for breastfeeding mothers, supporting them as they transition back to work or study after giving birth.

Dean's Suite, \$2,000,000, 1 opportunity

Located on the third floor, the dean's suite supports all the functions of the School of Nursing dean. The dean conducts the essential business of the school and receives distinguished visitors here. The suite encompasses the dean's office, the dean's conference room, a reception area, and offices of the dean's support staff.

Dean's Office: \$200,000, 1 opportunity

Located on the third floor, the dean's office incorporates private workspace, a meeting area that can comfortably accommodate groups of up to eight, and videoconferencing equipment.

Dean's Conference Room: \$200,000, 1 opportunity

The dean's conference room supports the work of the dean, providing a well-appointed space for essential gatherings related to the functioning of the school. The flexible room may be configured with seating for small lectures or with a large meeting table to accommodate twelve or more participants. The room is also outfitted with high-resolution video conferencing equipment and conference call technology.

Courtyard: \$250,000, 1 opportunity

The courtyard offers a welcoming gathering space with outdoor seating for students and faculty members. The courtyard supports a variety of activities and presents attractive possibilities for other activities, such as concerts or social gatherings.

*for more information on these
opportunities, contact:*

Niamh Emerson, Associate Director of Development

niamh.emerson@yale.edu
(203) 843-3449 phone

“

Science at Yale is a university-wide endeavor, including the Schools of Medicine, Nursing, and Public Health, Forestry & Environmental Studies, the Faculty of Arts and Sciences, and beyond.

Science can change – and improve – the world. The discoveries and new knowledge that emerge from our faculty members research will help solve some of the most pressing issues of our time.

*Peter Salovey, President of Yale University,
in his 2016 outline of academic priorities*



Yale SCHOOL OF NURSING

YALE SCHOOL OF NURSING
P.O. BOX 2739
WEST HAVEN, CT 06516-0972
203-785-2389

NURSING.YALE.EDU

Yale SCHOOL OF NURSING



NURSING.YALE.EDU