

# YALE GLOBAL NURSING

Annual Report: 2024-25



Yale SCHOOL OF NURSING

[nursing.yale.edu](https://nursing.yale.edu)



Mother Health International (MHI) operates the Ot Nywal Me Kuc (“House of Birth and Peace”) birth center in, a sustainable, solar-powered facility offering community-based, culturally attuned maternal and newborn care in Atiak, Uganda. Guided by the Quality Maternal and Newborn Care (QMNC) framework, MHI blends the skills of traditional midwives and nurse midwives to improve outcomes in a region where maternal and infant mortality rates are among the highest in the world. Since opening, the center has delivered over 15,000 babies without a single maternal death, achieving dramatic increases in prenatal care access, skilled birth attendance, and child survival. Through a partnership led by Associate Professor of Nursing, Dr. Michelle Telfer, MHI and YSN create transformative global health learning experiences for students while strengthening cross-cultural collaboration in midwifery practice.

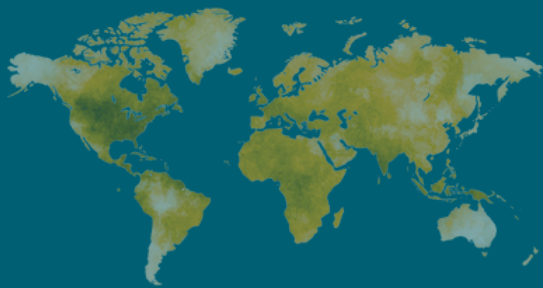


**Azita Emami, PhD, RN, FAAN**

Linda Koch Lorimer Professor of Nursing  
Dean, Yale School of Nursing



**Healthcare access is a global concern, and we have multiple opportunities to be a productive partner in global efforts focused on improving healthcare. We need to share knowledge and start addressing ways to not only treat illness, but also encourage wellness. We need to educate nurses to have global viewpoint and a global vision.**



# Honoring Our Legacy and Looking Forward

---

In July 2025, the Yale School of Nursing Office of Global Affairs and Planetary Health was officially renamed the **Office of Planetary Health and Global Engagement (PaGE)** to better reflect our evolving mission — placing planetary and human health at the heart of our work while underscoring our commitment to building inclusive, bidirectional partnerships that prepare nurses to lead transformational research, education, and policy initiatives. PaGE now operates within the newly formed Office of Nursing Impact, which bridges our research and expertise with real-world solutions to health challenges locally and globally.

We also honor the rich global heritage Yale School of Nursing has cultivated over decades, which laid the groundwork for our collaborative learning model and impact-oriented international initiatives.

# Yale SCHOOL OF NURSING

## *Planetary Health and Global Engagement*

## Yale Global Nursing Annual Report

Associate Dean: Christine Rodriguez  
Director: Asia Neupane  
Director of International Academic  
Partnerships and Programs: Zhao Ni

Photography: YSN Faculty, Staff,  
Students, Alumni, and Partners

Content: Asia Neupane, Sohani  
Sirdeshmukh

Design: Sohani Sirdeshmukh

Copy Edit: Gail McCulloch, Christine  
Rodriguez, Lillian Zepeda

Contributors:  
Sandy Cayo  
Jennifer McIntosh  
Zhao Ni  
Christine Rodriguez  
Michelle Telfer

Proofreaders: Steven Chrzas, Nicole  
Golvala, Mary Ann Marshak

Yale University School of Nursing  
Post Office Box 27399  
West Haven, CT 06515-0972

This issue of *Yale Global Nursing  
Annual Report* covers events that  
took place from July 1, 2024  
through June 30, 2025

Note from the Associate Dean	6
Note from the PaGE team	7
PaGE committee members: 2024-25	8
Fast facts	10
Emerging partners in a global network	12
Highlights	14
Africa	15
Asia-Pacific	19
Americas and Europe	23
Student spotlight	30
Visiting researcher spotlight	31
Partnership with Yale Institute for Global Health	32
Global health education	33
Connect with us	38

# From the Associate Dean



**Christine Rodriguez, DNP, APRN, FNP-BC, MDiv, MA, FNYAM, FAAN**

**Dear Esteemed Colleagues,**

It is with deep gratitude and an unwavering commitment that I embraced the role of inaugural Associate Dean of Nursing Impact at Yale School of Nursing (YSN). Together, we stand at the threshold of a new era, one defined by our shared commitment to Inclusive Brilliance (IB), where every voice, every perspective, and every talent across our beloved community is weaved into the very fabric of our shared mission.

The Office of Nursing Impact (ONI) brings together three dynamic teams across our school: the Office of Planetary Health and Global Engagement (PaGE), whose bidirectional partnerships amplify our reach and responsibility for human health across our planet; the Office of Diversity, Equity, Inclusion, and Belonging (DEIB) which ensures our community values are not only spoken, but deeply lived; and the Yale Simulation Unit (YSN-SU), where the future of clinical education unfolds via immersive, human-centered learning that sharpen our learners' clinical acumen.

Each of these teams carries its own distinct expertise, yet they are deeply united by a singular vision: to advance humanity through impact.

In the years ahead, you will witness their integration in purposeful and intentional ways. From simulation experiences grounded in person-centered care and human dignity, to planetary health initiatives that address the urgent and intersecting challenges of our time, such as climate disruption, pandemics, biodiversity loss, and global inequity, we are committed to weaving our expertise seamlessly into every learning moment. In doing so, we strive to build a model of education that is innovative, culturally responsive, and globally engaged; thus, transforming not only how we teach and learn, but also how we lead and serve. Our success is not solely measured in metrics, but ultimately in the lives uplifted, the communities fortified, and the future shaped by compassion, courage, and a spirit of collaboration.

It is a humble honor to serve in this capacity and a true privilege to lead alongside such dedicated colleagues and our wider community. I look forward to all that we will create, together.

Most Humbly,  
**Christine Rodriguez**  
Associate Dean of Nursing Impact

Photo credit Dan Renzetti

Nursing Impact

“At the Office of Nursing Impact, we unite planetary health, diversity and belonging, and simulation education under one shared vision: advancing humanity through impact. By weaving innovation, cultural responsiveness, and global engagement into every learning moment, we aim to uplift lives, fortify communities, and shape a compassionate, courageous future.”

# From the PaGE Team

**Dear Colleagues,**

We are very pleased to jointly present this year's Annual Report for our newly titled Office of Planetary Health and Global Engagement (PaGE). Our mission statement is the following: *To advance human and environmental health through local and global knowledge and collaboration.*

We are proud to highlight our shared achievements in international experiences, exchanges, programming, and impact. Our commitment to our students and faculty and renewed strategic planning around planetary health contributed to the school's mission of "better health for all." The restructuring process has brought us under the newly established Office of Impact led by Associate Dean Christine Rodriguez who has undertaken her leadership with intentionality and great enthusiasm. We are honored to work closely with Dr. Rodriguez as we envision a new chapter for PaGE – one that has been built with momentum in initiatives led by Dr. LaRon Nelson and Patricia Ryan-Krause, and is deeply rooted in the contributions of past deans and faculty

whose global engagement laid the foundation for our work today.

Despite ongoing challenges in global health, our faculty and our staff have shown resilience, flexibility in funding constraints, and dedication. We are grateful to our committee members for their guidance and input as we restructured, renamed, and developed a new mission for PaGE. We also offer special thanks to Drs. Zhao Ni, Michelle Telfer, Jennifer McIntosh, and Sandy Cayo who worked with us closely this past year and led transformational global health experiences for our students in China, Uganda, Japan, and Ghana.

You will read more about the key highlights from the year in the following pages, but we want to share a few themes that we leaned into this past year:

- Celebrating 10 years of Planetary Health
- Strengthening bidirectional exchanges with key global partners
- Amplifying our impact to develop global citizens and nurse leaders

As we reflect on the achievements of the past year, we are also reminded of the work

that lies ahead as we implement our new mission and vision. These themes set the foundation for our strategic plan for the coming year, which will focus on the following areas: Innovation, Global Nursing, Technology, and Equity ("IGNITE").

To kick off our strategic plan, we are pleased to share that we have launched a new international partners' platform and website ("BRIDGE") to enable multi-institutional collaborations between all our global partners. We are also launching several funding opportunities for all YSN students and faculty and planning several large events to include interdisciplinary approaches to planetary health.

We are grateful to our faculty, staff, students, donors, and partners, whose generosity and collaboration make our work possible. Thank you for your continued support and please do not hesitate to be in touch with your feedback and ideas.

**Best wishes,  
Office of Planetary Health & Global  
Engagement Team**



**Asia Neupane, Ed.D.**  
Director



**Sohani Sirdeshmukh**  
Assistant Director



**Mary Ann Marshak**  
Coordinator

# Advisory Committee: 2024-25

## Co-Chairs



**Asia Neupane, Ed.D.**  
Director  
Planetary Health & Global Engagement  
School of Nursing



**Zhao Ni, PhD, BMed, RN, FAAN, FAHA**  
Assistant Professor  
Director, International Academic  
Partnerships & Programs  
School of Nursing

Our work is strengthened by the thoughtful counsel of a cross-campus advisory committee. These members bring diverse expertise and perspectives that help sharpen our priorities, ground our partnerships in reciprocity and keep us oriented towards real-world impact. We are deeply grateful for their time, candor and sustained commitment to our mission.



**Bridget Basile-Ibrahim, PhD, MA,  
RN, FNP-BC**  
Assistant Professor  
School of Nursing



**Sandy Cayo, DNP, FNP-BC, PhD(c)**  
Assistant Professor  
School of Nursing



**Kai Chen, PhD**  
Assistant Professor of Epidemiology  
(Environmental Health)  
School of Public Health



**Lei Chen, MD, MHS, BS**  
Associate Professor of Epidemiology  
(Environmental Health)  
School of Public Health



**Daihnia Dunkley, PhD, RN**  
Senior Lecturer  
School of Nursing



**Ophelia Empleo-Frazier, MSN, GNP-  
BC, CDP**  
Lecturer  
School of Nursing



**Shelli Feder, PhD, APRN, FNP-BC,  
ACHPN**  
Assistant Professor  
School of Nursing



**Amber Garrard, MA**  
Director  
Office of Sustainability  
Yale University

# Advisory Committee: 2024-25



**Linda Ghampson, DNP, MSN, RN, CHSE**  
Lecturer  
Director of the Simulation Unit  
School of Nursing



**Kaveh Khoshnood, PhD, MPH**  
Associate Professor of Epidemiology  
(Microbial Diseases)  
School of Public Health



**Henry Kwan, '05 MA**  
Director for Shared Interest Groups  
Yale Alumni Association



**Ami Marshall, EdD, MSN, APRN,  
ANP-C**  
Senior Lecturer  
School of Nursing



**Jennifer McIntosh, PhD, RN, CNE,  
PMH-BC, NEA-BC**  
Lecturer  
School of Nursing



**Soohyun Nam, PhD, APRN, ANP-BC,  
FAHA, FAAN**  
Associate Professor  
School of Nursing



**Tracy Rabin, MD, SM**  
Associate Professor  
School of Medicine



**Christine Rodriguez, DNP, APRN,  
FNP-BC, MDiv, MA, FNYAM, FAAN**  
Assistant Professor  
Associate Dean of Nursing Impact  
School of Nursing



**Patricia Ryan-Krause, , MS, MSN,  
PCPNP-BC**  
Associate Professor Emeritus  
School of Nursing



**Stephanie Smerglino, APRN,  
FNP-BC**  
Part time Lecturer  
School of Nursing



**Michelle Telfer, DNP, MPH, CNM,  
FACNM**  
Assistant Professor  
School of Nursing



**Claudia Vallengia, PhD**  
Professor  
Department of Anthropology  
Faculty of Arts and Sciences



**David Vlahov, PhD, RN, FAAN**  
Professor  
School of Nursing  
School of Public Health



**Bonnie Weir, PhD**  
Senior Lecturer  
Jackson School of Global Affairs

# Fast Facts: 2024-25



6000+



YSN alumni have provided care throughout the United States and the world as of 2024

12<sup>th</sup>



Nursing school in the world 2024 QS World Rankings

30%



Faculty engage in global research and education

1 of 100



Institutions selected globally to pilot the use of XR technology for clinical skills and power skills through a partnership with Meta and Carnegie Mellon University

# Fast Facts: 2024-25



Global Health & Midwifery  
(Uganda Field Experience)  
Graduates

12

Total Global Field  
Immersion Hours

780

# Expanding the World of Yale Nursing

Emerging partners in a global network



University of Saskatchewan  
Canada



Halifax Institute  
Canada

Catholic University of  
Valencia  
Spain



Accra School of  
Hygiene  
Ghana



Kwame Nkrumah University  
of Science and Technology  
Ghana



University of São Paulo  
Brazil

# Expanding the World of Yale Nursing

Emerging partners in a global network



# Highlights

Over the past academic year, PaGE marked 10 years of planetary health leadership, launched a monthly Global Collaborative Series with Michigan and Vanderbilt that links nursing practice to the Sustainable Development Goals, and launched BRIDGE, a collaboration of partners with a digital platform that lets more than 30 partner institutions co-create projects in real time. Faculty, students, and community partners extended that momentum together: co-designing health equity initiatives with Kenya's Ministry of Health, collaborating with the Smithsonian in East Africa on examining ecosystem-finance links, and participating in field immersion in Ghana, Uganda, China, and Japan that strengthened cultural humility and reciprocal systems learning.

PaGE has grouped its programming and collaborations by region:

- Africa – clinical training at Mother Health International in Uganda and KNUST in Ghana, plus non-profit and system-level collaborations with Kenyatta National Hospital and governmental partners in Kenya.
- Asia-Pacific – long-standing research and exchange nodes with Central South University and Peking University (China), the University of Tokyo (Japan), Korea University and Yonsei University (South Korea), Airlangga University (Indonesia) and Deakin University (Australia).
- Americas & Europe – partnerships ranging from the University of Saskatchewan (Canada) and the University of São Paulo (Brazil) to the Catholic University of Valencia (Spain), expanding our impact from the Arctic to the Amazon. This region also covers initiatives happening at Yale with global partners, including hosting them on campus.

This regional framework aligns with Yale's Office of International Affairs regional approach and, most importantly, ensures that local partner priorities drive our shared projects. In turn, it gives students, faculty, and community colleagues a clear map of opportunities to advance “better health for all people” together.



July 1, 2024 - June 30, 2025



Africa

# Midwifery Clinical Experience in Uganda at the House of Birth and Peace

## Faculty Reflection



**Michelle Telfer, DNP, MPH, CNM, FACNM**

Faculty Lead, Midwifery Clinical Experience in Uganda

**YSN Fellowship Recipients:** Yamilka De Dios, MSN '25; Courtney Hart, MSN '25; Hanna Hurtubise, MSN '25; Claudia Lesser, MSN '25; Kathleen McGovern, MSN '25; Deyanisse Monegro, MSN '25; Olivia Reilly, MSN '25

Every year this experience is unique. I have the pleasure of seeing our students experience midwifery in a whole new model that is fully integrated into a rural and low-resource setting, and I also learn and grow with each group. The Mother Health International birth center is in Atiak, Uganda, close to the border of South Sudan and an hour ambulance ride away from the main hospital (if a mother or baby needs higher level care.) Malaria and typhoid are endemic but so are community and joy. In 2024, we had our largest group, seven midwifery and dual midwifery and women's health nurse practitioners—three of them were parents to small children that they left behind for a month in exchange for this experience. This group brought energy, openness and cultural humility that resonated deeply with the community at the birth center. They learned from Ugandan nurse-midwives and traditional midwives how to support normal labor and how to care for mother and baby together, something that is uncommon in hospital birth in the United States where nurses and pediatricians take care of the newborn after birth, not the midwife. They learned to cook local food from Zilla, the birth center head cook, in an outdoor kitchen with mud stoves powered by charcoal. They learned to eat a seasonal delicacy and an incredible source of protein, fried termites! Students learned what foods the community has access to and the amount of preparation and cooking time it takes. They gain a cultural understanding of how to support nutrition in pregnancy in that community. Students accompanied the health care team on outreach clinics to far away villages to provide care to women who could not easily get to the birth center. They provided care in the huts of the traditional midwives and they visited farms to see the day to day work that women do. They also rotated at the referral hospital to see the contrast in care from the birth center to a busy tertiary care labor ward. This work provided context for the varied health care settings. This group was supportive of each

other, which was a joy to experience. They worked as a team, celebrated births, new skills, shared laughter and comforted one another when days or nights were tough. We all came away with a sense of belonging in a new community and with renewed strength to continue to push for better midwifery models of care that the World Health Organization is advocating for and to fulfill Yale School of Nursing's mission.



YSN Faculty and midwifery students with MHI Executive Director and traditional midwives at the Atiak birth center in Uganda

# Partnering for Health Equity in Kenya



In March 2025, YSN deepened its longstanding commitment to global partnership through a strategic visit to Kenya, a country working to expand healthcare access across diverse regions as part of its universal healthcare strategy. With a strong foundation of community-based care and innovative national policies, Kenya offers a compelling context for bidirectional learning and collaboration. Dean Azita Emami’s visit focused on co-designing programs that align YSN’s research and leadership goals with Kenya’s healthcare priorities, particularly in rural and underserved areas. Conversations with the Ministry of Health, Kenyatta National Hospital, and community partners highlighted shared opportunities in training, research, and system-strengthening.



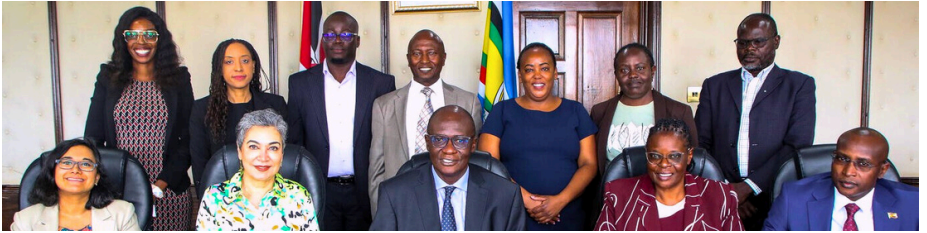
The visit, in collaboration with Dr. Janette Yarwood from Yale’s Office of International Affairs, built on Yale’s broader engagement in Africa. It has led to jointly developed concepts between YSN, Kenyan NGOs, and community health leaders, underscoring the importance of reciprocal collaboration where mutual learning, community priorities, cultural understanding, and equity are central to progress.



***“It was an inspiring visit. I had the privilege of seeing healthcare providers—nurses in particular—who had remarkable, sustained success with their patients despite having limited resources...I am excited about co-designing this type of collaboration with our partners in Kenya that will also include Kenyan community health promoters to be more connected with each other and with nurse-leaders and physicians who can provide additional support as needed.”***

- Dean Azita Emami

Dean Azita Emami and Yale delegation with leaders at the Kenya Ministry of Health, the Sarara Foundation, and Wamba County Hospital, joined by Hon. Pauline Lenguris



Dean Azita Emami's visit to Kenya with Yale delegation and partners, and midwifery global health experience in Uganda led by Associate Professor Michelle Telfer



# Asia - Pacific

# Yonsei Visit Advances Korea-Yale Collaboration on Climate and Health

In November 2024, YSN Assistant Professor Zhao Ni visited Yonsei University College of Nursing in Seoul, South Korea, to advance collaboration in climate-related health research and training. Building on Yale's longstanding academic engagement in Asia, the visit included exchanges with Yonsei leadership and faculty to identify shared priorities in climate and health, digital innovation, and cross-regional capacity building. Discussions drew on Yonsei's partnerships in Asia and Africa and explored opportunities to connect these networks with YSN's global initiatives. The visit has led to renewed collaborations, with plans for Dean Azita Emami to return to Seoul in the coming year as part of a broader commitment on climate change and health-related opportunities.



YSN Assistant Professor Dr. Zhao Ni with Yonsei University faculty at the College of Nursing in Seoul, South Korea



YSN Assistant Professor Dr. Zhao Ni with Hyeonkyeong Lee, Dean of the College of Nursing, Yonsei University in Seoul, South Korea



Yale faculty at Central South University in China

# Xiangya School of Nursing & Chia Health Fellowship

Founded in November 1911, the Hsiang-Ya Nursing School was among China’s first modern nursing institutions, born of the pioneering “Hunan–Yale” partnership that would launch Xiangya Medical College three years later. The very name - **Xiang** for Hunan, **ya** for Yale - honors a century-long commitment to rigorous, Western-style health professional training. That legacy took center stage in December 2024, when Central South University (CSU) marked the 110th anniversary of Xiangya medical education and recognized the Yale-China Association’s enduring role in shaping the school’s global outlook.

To celebrate, Yale School of Nursing faculty, including Drs. Xiaomei Cong, LaRon Nelson, Zhao Ni, and Joanne DeSanto Iennaco, traveled to Changsha to join the anniversary festivities and contribute to the 23rd Annual Chia Family Health Fellowship Conference, co-hosted by CSU’s Xiangya School of

Nursing and the Yale-China Association. Centered on “*Behavior and Mental Health in Rural China*,” the conference gathered international experts to share evidence-based strategies for improving behavioral health in underserved communities. Yale faculty led lively panels on community-based care, mobile-health innovation, and culturally adapted interventions.

The visit reaffirmed the depth of the Yale–CSU alliance, strengthened since 1998 by the Chia Family Health Fellowship Program, which has enabled more than 75 Chinese women’s-health professionals to pursue advanced study at Yale. Dr. Ni highlighted the partnership’s vitality and called for expanded two-way exchanges. Working alongside the Yale-China Association, both institutions are now designing new programming and broader student and faculty engagement to advance collaborative research and cultivate the next generation of global nursing leaders.

# Cross - Cultural Nursing Exchange in Tokyo

## Faculty Reflection



**Jennifer McIntosh, PhD, APRN, PMHNP-BC, CNE, NEA-BC**

Faculty Lead, Tokyo Spring International Program

**YSN Fellowship Recipients:** Megan Allen, DNP '25; Batchimeg Erdenebaatar, MSN '26; Abbe Riffle, MSN '26; Carolina Rodriguez, MSN '27; Intan Sulistyawati, PhD '29

For the third year, I had the honor of accompanying Yale School of Nursing graduate and doctoral students to the University of Tokyo's Spring International Program, themed *Innovative Approaches and Methodologies in Nursing Science*. This year was particularly special as we first hosted University of Tokyo students at YSN, and UTokyo coordinated an extended immersive experience exclusively for the YSN students. The program brought together nursing graduate students and faculty from across the U.S., Philippines, India, Indonesia, China, Taiwan, Hong Kong, Korea, Bangladesh, Canada, Singapore, and Norway. One of our trip highlights was the "Speed Dating" session I facilitated. Each YSN student rotated through preset tables of Tokyo team members in five-minute rounds to explore shared interests and potential research or QI collaborations. The concept was new to most

UTokyo and some YSN students, which made it even more fun to introduce and adapt. I ended the session with a short survey, and feedback from both faculty and students was very positive.

This year also offered a chance for meaningful connection beyond the program itself. I met with Dr. Mari Ikeda to discuss a research collaboration on trauma among psychiatric nurses in Japan, which will also involve Yuki Miyamoto from the University of Tokyo and Jinfeng (Ethan) from Central South University, building on a related project we are conducting in China (funded by the Li Foundation). The trip was a professional, personal, and spiritual experience, and I remain incredibly grateful to everyone who made this collaboration possible.



Faculty and student participants during the 2025 Spring International Program



# Americas and Europe

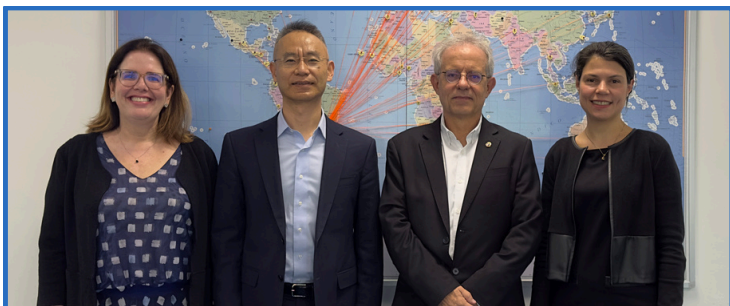
# Nursing Collaboration, Research and Exchange in Brazil



In December 2024 Professor Xuehong Zhang, Assistant Dean for Research, traveled to São Paulo to advance Yale School of Nursing's collaboration with the University of São Paulo (USP). During the visit, he met with colleagues at USP's Schools of Nursing and Public Health, visited additional nursing and public-health programs in the city, and reconnected with alumni at a gathering hosted by Ya Ping Chang '91 of the Yale Club of Brazil. The trip underscored YSN's commitment to co-building reciprocal relationships with Brazilian colleagues that link education, research, community priorities, and alumni engagement.

Professor Zhang's discussions built on his 2022 Lemann Brazil Research Fund award for the study "Assessing the Prospective Role of Ultra-Processed Foods on Adiposity-Related Outcomes in Brazil." Working with USP investigators, he reviewed progress and explored next steps in examining nutrition-related chronic disease.

Dr. Zhang's visit and meetings have led to joint conversations on health disparities, nursing leadership, and community-based prevention that align with goals at both institutions.



Associate Dean for Research Xuehong Zhang with faculty, staff, and students from the University of São Paulo and members of the Yale Club of Brazil

## YSN Class Examines Wartime Healthcare Challenges with Ukrainian Guest Lecturer

**Dr. Kateryna Lokes outlined the cascading health impacts of armed conflict, identifying three pressing concerns: antibiotic resistance, interruptions in chronic-disease management, and refugee health. She explained that disrupted supply chains and delayed care are fueling a rise in drug-resistant infections, while displaced populations face gaps in ongoing treatment and basic health services. “Antibiotic resistance is not only Ukraine’s problem—it is a global concern,” she cautioned, underscoring the need for coordinated international action.**

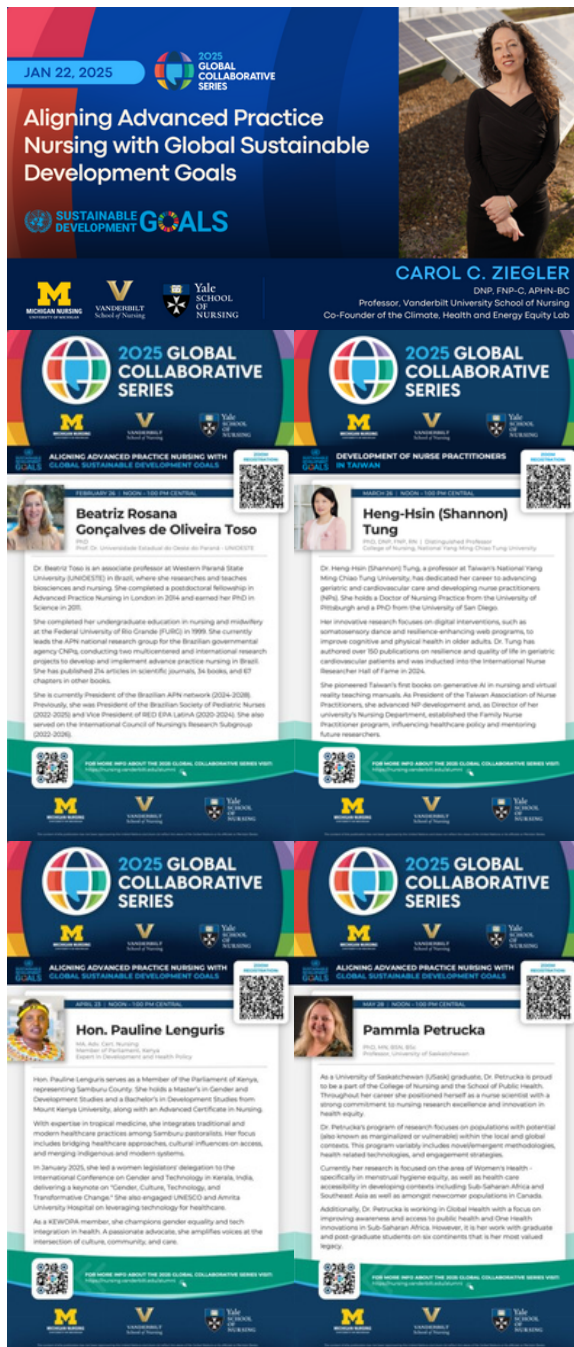
In November 2024, YSN’s Office of Planetary Health and Global Engagement hosted Dr. Kateryna Lokes as part of a global health course on healthcare delivery amid the war in Ukraine. Dr. Lokes is a professor at Poltava State Medical University and Fulbright BridgeUSA Ukrainian Academic Fellow. Her visit, arranged through the University of New Haven’s School of Health Sciences and Fulbright Ukraine, capped a four-week teaching residency in Connecticut and offered students, faculty, and invited global health partners an on-the-ground briefing on how the Russian invasion has disrupted a health system that had been undergoing rapid modernization. Dr. Lokes outlined rising civilian mortality, declining birthrates, the surge in demand for prosthetic services, and widespread mental health needs, while noting the broader implications for antibiotic resistance, chronic-disease management, and refugee care.

Student discussions at Yale focused on practical responses: trauma-informed pediatric support, scalable mental health services in conflict zones, and maintaining chronic care access when supply lines falter. Dr. Lokes emphasized the importance of sustained international engagement. The exchange advanced course objectives by linking classroom learning to an active global health crisis and expanded YSN’s collaboration network with practitioners working on the front lines of humanitarian response.



Dr. Kateryna Lokes, Professor at Poltava State Medical University in Ukraine, presenting at YSN

## New Collaborative Series Connects Nursing Practice to Sustainable Development Goals



Our office marked 10 years of planetary health by launching a global collaborative series in partnership with the University of Michigan and Vanderbilt University.

This reflects a critical step in empowering nurses to lead in addressing the world’s most pressing health and environmental challenges. The monthly event series through 2025 creates a dedicated space for nurse leaders, scholars, and students to engage with global frameworks like the SDGs and translate them into meaningful, practice-based action.

By spotlighting the unique role of Advanced Practice Nurses (APNs) in promoting health equity, climate resilience, and sustainable healthcare systems, the series underscores the transformative power of nursing in shaping a more just and sustainable future.

“ I really appreciate this perspective, the way you have connected the dots, and highlighted why nursing needs a new image/identity as global citizen scientists.

*Reflection by attendee, Grace K.*

## Building Emerging Leaders in Global Nursing with the University of Tokyo



Graduate students from the University of Tokyo at Yale School of Nursing

As part of a reciprocal exchange with The University of Tokyo's Global Nursing Research Center, eight University of Tokyo graduate students spent a week in New Haven in March 2025, immersing themselves in Yale's approach to global nursing leadership. Their visit centered on a series of interactive sessions that linked scholarship with practice: Professor Tracy Rabin framed "Equitable Global Health Partnerships," Dr. Charissa Owens guided a Cultural Intelligence (CQ®) workshop, and Jieun Pyun of Yale's Office of International Affairs discussed regional engagement strategies over an informal breakfast conversation. YSN students shared their own field experiences, giving the visitors a peer-level view of global health training, while tours of the medical and main campuses highlighted resources available for trans-Pacific collaborations.

The exchange encouraged participants to see themselves as emerging leaders in a shared professional community. By pairing classroom dialogue with networking and cultural-competence training, the program advanced both institutions' goals of preparing nurses to address health challenges that cross geographic and disciplinary boundaries, and it set the stage for continued joint projects and student exchanges in the year ahead.



**My experience in the program at Yale was truly meaningful. It made me realize that I am not only an important part—but also a potential leader—of the global health community.**

*Reflection from University of Tokyo PhD student Yoshiaki Kanamori following the Yale exchange visit*

## Exploring Planetary Health Collaborations with Partners

### Ecosystems, Finance & Health

In August 2024, YSN co-hosted a two-day visit from the Ecosystems, Finance & Health (EFH) initiative led by the Smithsonian Institution and co-sponsored by Yale, to explore how innovative financing can advance ecosystem conservation and public health, especially in Africa. The delegation, led by Dr. James Hassell and Dr. Joseph Kamau, met with YSN faculty and the Planetary Health and Global Engagement Committee members following the briefing at Yale School of Public Health. The exchange laid the groundwork for a multidisciplinary partnership that will position YSN to contribute nursing expertise to EFH's emerging portfolio of ecosystem-health financing solutions.



Drs. James Hassell (L) and Joseph Kamau (R), Co-Directors of EFH

### University of São Paulo (USP)

Following up to YSN and USP virtual programming exploring joint initiatives, in May 2025, PaGE Director Dr. Asia Neupane was featured as a virtual speaker at the Sustainable Healthcare conference at USP. The conference focused on a wide range of topics on sustainability practices in healthcare as well as global health challenges. Asia spoke about the newly launched PaGE as an office and its mission to empower students and faculty to become transformative leaders and stewards of planetary well-being. USP and YSN are now developing faculty and student exchange opportunities - including around a conference on the UN Sustainable Development Goals.



Poster for USP conference on Sustainable Healthcare

## Exploring Planetary Health Collaborations with Partners

### Amref International University

In May 2025, The Yale School of Nursing welcomed a delegation from Amref International University (AMIU) - the academic arm of Amref Health Africa, the continent's largest home-grown health-development organization for an afternoon of strategic dialogue around the planetary health framework and nursing leadership.



Amref University delegates with Office of Nursing Impact Associate Dean Christine Rodríguez and PaGE Director Asia Neupane

### Korea University

The Yale School of Nursing welcomed a delegation from Korea University in May 2025, including senior faculty and leaders from its nursing school. Highlights included visits around West Campus with YSN faculty and meetings with YSN Dean Azita Emami and other academic leaders to discuss regional challenges around planetary health and health equity.



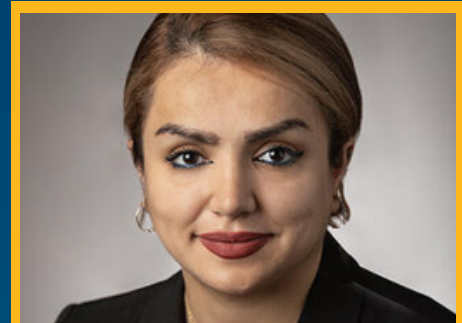
Korea University delegates with PaGE Director Asia Neupane and Assistant Professor Zhao Ni at Yale School of Nursing

# Student Spotlight



**Christina Pantzer**  
MSN '25

Christina Pantzer (MSN '25) co-directed Yale's Neighborhood Health Project pop-up vaccine clinic at New Haven's Loaves & Fishes, where she and a student team delivered 120 flu and COVID-19 vaccinations over four Saturdays in October 2024 and expanded access for uninsured and Spanish-speaking neighbors. On February 15, 2025, Pantzer helped lead the interdisciplinary team "Vida Digna" to first place at the 6th Annual Yale Institute for Global Health Case Competition with a culturally grounded plan linking rain harvesting, soil restoration, and community-run food collectives to address climate-related food insecurity in the Ecuadorian Andes. Her nomination, "Child Substance Use Among the Qom/Toba of Northern Argentina," received an honorable mention in the 2025 Global Health Now—Consortium of Universities for Global Health (CUGH) Untold Global Health Stories contest and is recognized among CUGH's 2025 awardees.



**Yosra Raziani**  
PhD '27

Pediatric nurse and YSN doctoral student Yosra Raziani focuses on pediatric health, sleep, cancer, women's health, diabetes, and health disparities affecting refugees and other marginalized populations; in 2025 she joined UNICEF headquarters as a Yale Institute for Global Health (YIGH) Leadership in Global Health Fellow, interning with the Adolescent, School, and Mental Health team to support evidence synthesis and knowledge products for adolescent mental health programming. She contributed to Yale's 2025 YIGH Global Health Case Competition as a case-writing team member and earned an honorable mention in YSN's 2024 Creative Writing Awards for her poem "Whispers of Change: A Solitary Voice in the Tech Tide." Raziani traces her commitment to protecting children to a childhood memory from Pawa, Iran, when a UNICEF responder comforted her family after a flood and urged her to "study hard"- a promise she now advances through research and practice.



# Visiting Researcher Spotlight



## **DUAN Rufe**

2025 Yale-China Health Fellow

**Faculty mentor:** Dr. Hermine Poghosyan, Associate Professor at Yale School of Nursing  
**Fellowship topic:** "Study on Appropriate Community-based Cervical Cancer Screening and Management Model in Rural Yunnan."

*Rufe Duan is an Associate Professor and public health medical doctor in Yunnan Cancer Hospital, the Third Affiliated Hospital of Kunming Medical University.*



## **JI Binbin**

2024-25 Visiting Associate Professor

**Faculty mentor:** Dr. Zhao Ni, Assistant Professor at Yale School of Nursing  
**Fellowship topic:** Fellowship topic: "Receive training in mobile health (mHealth) research, which includes leveraging mHealth to promote health outcomes in vulnerable populations."

*Binbin Ji is an Associate Professor at the School of Nursing, Hunan University of Chinese Medicine.*



## **LI Jing**

2024 Yale-China Health Fellow

**Faculty Mentor:** Dr. Zhao Ni, Assistant Professor at the Yale School of Nursing  
**Fellowship topic:** "Development and Application of a Visualization Tool for Capability Assessment of Community-dwelling Elderly."

*Jing Li serves as a Research Assistant at the "Mobile Health" Ministry of Education-China Mobile Joint Laboratory.*



## **QIU Tieying**

2024 Yale-China Health Fellow

**Faculty mentor:** Dr. Soohyun Nam, Associate professor in Yale School of Nursing  
**Fellowship topic:** "Application Evaluation of Resistance Baduanjin Exercise Program for Elderly Patients with Osteoporosis and Lumbar Disc Herniation."

*Tieying Qiu is an Associate Professor of Nursing in the spinal ward at the Second Xiangya Hospital of Central South University. She has worked for ten years as a clinical nurse.*

# Advancing Global & Planetary Health: YSN's Partnership with Yale Institute for Global Health

The Yale Institute for Global Health (YIGH) is Yale's university-wide hub jointly led by the Schools of Nursing, Medicine, and Public Health. YIGH partners with the Yale School of Nursing (YSN) to support programming and funding efforts on global and planetary health. Together, we connect students and faculty to interdisciplinary education, collaborative research, and real-world learning that tackles urgent health challenges. Through YIGH, YSN's curricula stretch beyond the classroom: shared teaching, campus-wide programs, and experiential opportunities equip our students and our faculty through the faculty networks to lead at the intersection of education, service, and advocacy, at Yale and around the world.

In February 2025, YSN students and faculty took center stage at YIGH's 6th Annual Global Health Case Competition: the winning team, **Vida Digna**, included Christina Pantzer (MSN '25), and YSN Senior Lecturer Jennifer McIntosh served as a judge, spotlighting nursing leadership in an interprofessional, climate and health challenge.



In March 2025, YIGH's U.S. Global Health Policy & Advocacy Study Tour brought a 20-student Yale delegation from Public Health, Medicine, and Nursing to Washington, D.C. for immersive dialogues on global health and policy. The program featured briefings at the Center for Strategic and International Studies (CSIS), discussions on Capitol Hill, and panels with leaders from KFF (formerly Kaiser Family Foundation), Gavi, the Vaccine Alliance, and the Global Fund. YSN was represented on the tour, giving our learners first-hand insight into how federal policy, appropriations, and advocacy intersect with global health priorities.



YIGH's Global Health Seminar (EPH 591) brings speakers and faculty from across Yale; recent sessions included Michelle Telfer, DNP, MPH, CNM, FACNM, Associate Professor of Nursing and Tracy Rabin, MD, MS, Associate Professor of Medicine and Clinical Professor of Nursing, underscoring the cross-school learning environment YSN students experience.



YSN's voice is also amplified on YIGH platforms. On the Yale Global Health Insights podcast, host Dr. Sharon Chekijian spoke with Dean Azita Emami about global nursing leadership, immigrant health, culturally responsive care, and enabling nurses to practice at full scope, reinforcing YSN's role in advancing equitable primary care worldwide.





# Global Health Education



# From the Director

**Zhao Ni, PhD, BMed, RN, FAAN, FAHA**

Yale University stands as a beacon of excellence in education, science, and research on the global stage. This prestigious reputation has been crafted over many generations through dedicated efforts and extensive engagements with communities worldwide. With this legacy, the Yale School of Nursing (YSN) is an active player and important contributor. On one hand, YSN's active engagement in global health significantly contributes to the advancement of well-being for diverse populations worldwide. On the other hand, YSN's worldwide recognition has multifaceted benefits for its students, faculty, and staff, ranging from widened opportunities and enhanced well-being to the establishment of expansive networks that foster innovation. Personally, I find this reputation encapsulated in a story: sporting a YSN T-shirt while strolling through Chengdu's Tianfu Square, a location 7,500 miles distant in China, prompts pedestrians to recognize the name "YALE" and greet you with a nodding smile or a thumb-up, indicative of respect and support. This recognition stems from Yale's rich history of involvement in China. Even in places as distant as Surabaya, situated 10,000 miles away and requiring a 30-hour flight, professors and students from Airlangga University display their keen interest in partnering with YSN professors and students. This vibrant recognition transcends borders, resonating in nations like Ghana, Malaysia, Nepal, Panama, and the Philippines, underscoring the far-reaching positive influence of Yale University. As part of Yale University, we should carry forward this legacy with unwavering enthusiasm and active participation in global health endeavors. This becomes even more significant in a time when the world just recovered from a global pandemic and confronts pressing climate challenges. Our fervent engagement in global health serves as a beacon of hope.

In recognition of the growing importance of global health in nursing education, YSN's Global Health Track is transitioning into a formal Global Health Concentration. This Concentration prepares students to serve diverse populations as clinicians, educators, scholars and policy makers, both internationally and domestically. The curriculum includes interdisciplinary coursework, immersive fieldwork and five thematic pathways: midwifery, indigenous and modern healthcare, refugee health, mental health, and planetary health. Students complete two required courses, a pathway-specific elective, and 84 clinical hours in global or local setting serving international populations. Through this structure, students deepen their cultural humility and systems thinking while building meaningful partnerships in countries like Brazil, China, Ghana, Indonesia, Japan, Kenya, Malaysia and Uganda.

As an educator, I am deeply inspired by the students who engage in these experiences with passion and openness. In recent years, YSN students have participated in global health experiences in Cabo Verde, Ghana, Japan, and China. They visited partner universities, community clinics, medical centers, and high-tech companies; learned from peers and faculty abroad; and attended international forums. Behind each trip is the careful coordination of the Office of Global Affairs and Planetary Health (recently renamed the Office of Planetary Health and Global Engagement), along with the dedicated efforts of faculty members to ensure meaningful learning experiences. Watching our students grow into compassionate, globally minded practitioners is both a joy and a privilege. I am proud to work alongside colleagues and students on this journey. With this new concentration, we affirm our belief that global engagement is not an add-on, but a core component of advanced nursing education.

# Global Health Track: 2025 Graduates

---



**Shing Ma (Steve) Li**  
Psychiatry Mental Health Specialty  
MSN '25



**Christina Pantzer**  
Psychiatry Mental Health Specialty  
MSN '25



**Brianna McGrath**  
Family Nurse Practitioner Specialty  
MSN '25



**Courtney Swenson**  
Pediatric Primary Care Specialty  
MSN '25



**Deyanisse Monegro**  
Nurse Midwifery and Women's Health  
MSN '25



**Andrea Tamayo**  
Pediatric Primary Care Specialty  
MSN '25

# Global Health Track Field Experience in Ghana

## Faculty Reflection



### Sandy Cayo, DNP, FNP-BC, FAAN

Faculty Lead, Global Health Field Experience in Kumasi

**YSN Fellowship Recipients:** Shing Ma (Steve) Li, MSN '25; Brianna McGrath, MSN '25; Deyanisse Monegro, MSN '25; Christina Pantzer, MSN '25; Courtney Swenson, MSN '25; Andrea Tamayo, MSN '25



August 2025 marks the one-year anniversary of taking students to Kwame Nkrumah University of Science and Technology (KNUST) in Kumasi, Ghana—a transformative global health immersion that brought six students from the Yale School of Nursing's Global Health Track to Ghana for an unforgettable two-week journey. In partnership with master's-level students at KNUST, our students engaged in hands-on, interdisciplinary projects that bridged clinical expertise, cultural understanding, and public health innovation. From exploring the structure of Ghana's healthcare system to collaborating on maternal health, chronic disease management, and community education initiatives, the exchange offered a rich platform for learning, connection, and growth. The energy, curiosity, and compassion our students brought were matched by the warmth and brilliance of their Ghanaian counterparts, creating a dynamic and deeply meaningful cross-cultural partnership.

Reflecting on this milestone, we celebrate not only the clinical and academic outcomes of the program but also the powerful relationships and shared visions for global health equity that emerged. Our students returned forever changed—more grounded in cultural humility, more passionate about systems-level thinking, and more committed to advancing justice through nursing. The exchange's legacy lives on through ongoing collaboration, student-led initiatives, and a renewed dedication to reciprocal global partnerships. As we honor this anniversary, we look forward to expanding the Cultural Exchange and continuing to cultivate the next generation of nurse leaders who understand that health equity begins with listening, learning, and standing in solidarity across borders.



Faculty lead Dr. Sandy Cayo with YSN Global Health Track '25 students and KNUST faculty and students

# Global Health Track Field Experience in China

## Faculty Reflection



**Zhao Ni, PhD, BMed, RN, FAAN, FAHA**

Faculty Lead, Global Health Field Experience in China

**YSN Fellowship Recipients:** Shing Ma (Steve) Li, MSN '25; Brianna McGrath, MSN '25; Christina Pantzer, MSN '25; Andrea Tamayo, MSN '25



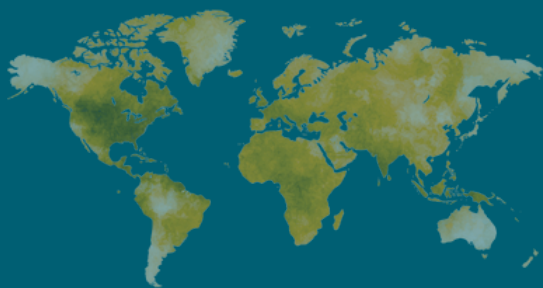
In March 2025, I had the opportunity to lead four Yale School of Nursing (YSN) students on a 9-day academic and cultural immersion trip to China. Our journey took us to two major cities, Beijing and Changsha, where we engaged with a wide range of clinical, academic, and cultural settings. During the trip, students visited eight hospitals and clinics, including prestigious institutions such as Peking University First Hospital and Xiangya Hospital, as well as community clinics and a hospital specializing in traditional Chinese medicine. These site visits provided valuable insight into healthcare delivery across multiple levels of the Chinese health system and encouraged students to critically compare practices with those in the United States.

In addition to clinical exposure, the students spent time at three prominent universities: Peking University, Central South University, and Hunan University of Chinese Medicine. There, they engaged in meaningful exchanges with faculty, researchers, and nursing students. These interactions sparked dynamic discussions around global nursing challenges, research priorities, and potential avenues for future collaboration. Beyond formal academic activities, cultural experiences played a vital role in shaping the students' perspectives. Visits to the Forbidden City, the Hunan Museum, and the Traditional Herb Museum offered context for understanding how history, culture, and traditional healing practices continue to influence health beliefs and systems of care in China.

It was deeply rewarding to witness how this immersion expanded students' worldviews, strengthened their cross-cultural competencies, and deepened their understanding of nursing within a global framework. Their enthusiasm and curiosity left a strong impression on our hosts and reaffirmed the importance of experiential global learning in preparing the next generation of nurse leaders.



Director of Global Health Track and faculty lead Dr. Zhao Ni with YSN Global Health Track '25 students and faculty, staff, and students from partner institutions in China



# Office of Planetary Health and Global Engagement

*Advancing human and environmental health through local and global knowledge and collaboration*

## **Our Mission:**

The Office of Planetary Health and Global Engagement (PaGE) pursues better health for all by developing nursing leaders through education, collaborations, research, and practice to advance global health equity and support planetary health.

## **Contact us**

[ysn.global@yale.edu](mailto:ysn.global@yale.edu)



**Asia Neupane, Ed.D.**  
Director

[asia.neupane@yale.edu](mailto:asia.neupane@yale.edu)



**Sohani Sirdeshmukh**  
Assistant Director

[sohani.sirdeshmukh@yale.edu](mailto:sohani.sirdeshmukh@yale.edu)



**Mary Ann Marshak**  
Coordinator

[maryann.fuentesmarshak@yale.edu](mailto:maryann.fuentesmarshak@yale.edu)

## **Connect with Yale School of Nursing**

Giving



LinkedIn



YouTube



Facebook



Instagram





